

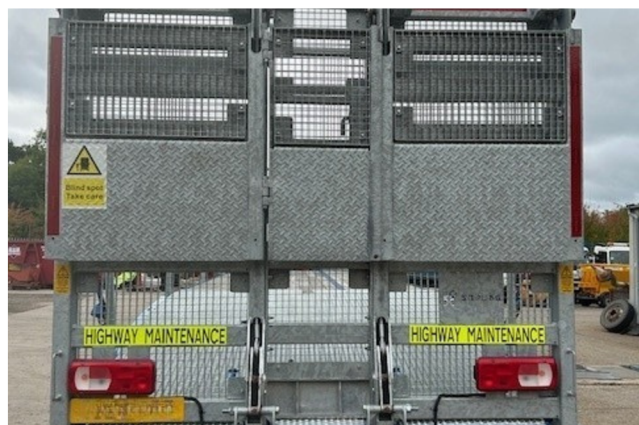


26T Beavertail

Specification

- ✓ Low profile beavertail body.
- ✓ 12,000lb electric winch, complete with radio remote control and wander lead.
- ✓ Webbing straps integrated handrail system.
- ✓ LED work lights and REG 65 beacons.
- ✓ Reverse camera and Chapter 8 livery.
- ✓ Mounted Toolbox.

- Available short to long time hire.
- Delivery/Collection service available.
- Nationwide coverage of mobile engineers.



Belfast
ND Brown Ltd,
7a Crumlin Road,
Crumlin,
Belfast
BT29 4AD
02894 470436

Scotland
ND Brown Ltd,
Transport House,
Plean Industrial Estate,
Plean
FK7 8BJ
01786 231996

Wolverhampton HQ
ND Brown Ltd,
Old Stafford Road,
Slade Heath,
Wolverhampton
WV10 7PD
0345 0342 055

South West
ND Brown Ltd,
148 Priorswood Road
Taunton,
Somerset,
TA2 8DW
01884 860767

South East
ND Brown Ltd,
Unit 1A Platt Industrial Estate,
Maidstone Road,
Borough Green,
Sevenoaks,
Kent
TN15 8JL
01732 358277

- Our Key Depots
- Our Mobile Technicians

0345 0342 055
 enquiries@ndbrown.co.uk

Nationwide Coverage

Find out more

